

Command Lookup

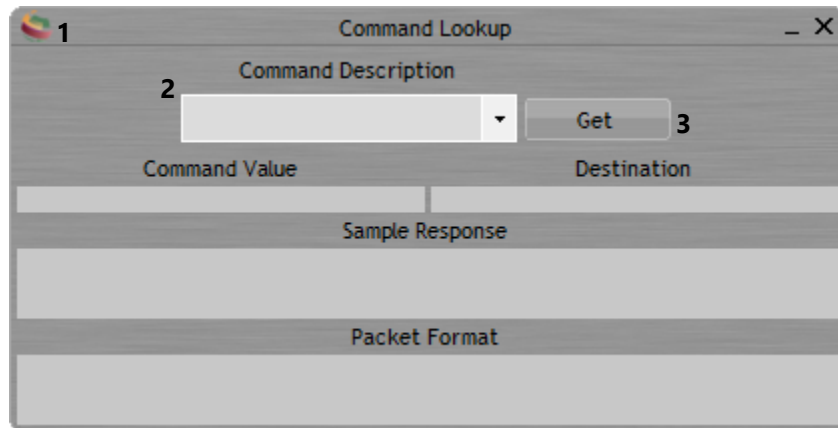
- 1) Interface**
 - a) Main**
 - b) Menu**

Command Lookup provides the ability for a user or software developer to find and display the command value, destination, sample response and packet format of all the remote commands of the PILOT software. When a custom module is added to the system, any remote commands included in the custom module will also be added to the Command Lookup. In order for the Command Lookup to recognize any new commands in the custom module, all of the information for each command must be appended to the Commands.ini file located in the resources folder in the SemiProbe directory where PILOT Control software was installed. If this information is not added to those files or an unknown is entered into the command description box a default value of 9999 will display in the CMD # textbox; indicating the command was not found.

When using the Command Lookup, a user can choose a command from the item 2 in the interface section or they can manually enter the name or number of the command they are looking for.

1) Interface

a) Main

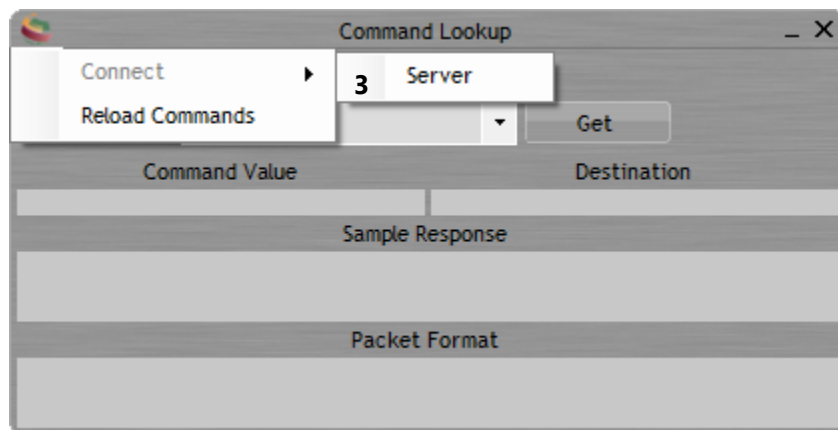
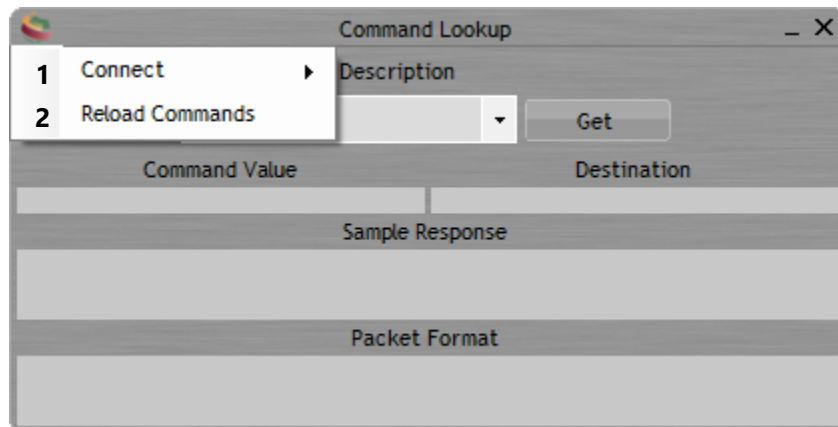


1 Menu

2 Remote Commands- All remote command can be found in the drop-down box.

3 Get Command Information - Finds the command information based on the command in number 1 and displays the information in the CMD Value, Destination, Sample Response and Packet Format.

b) Menu



1 Connect - Displays option to connect to the SemiServer.

2 Reload Commands -

3 Server -